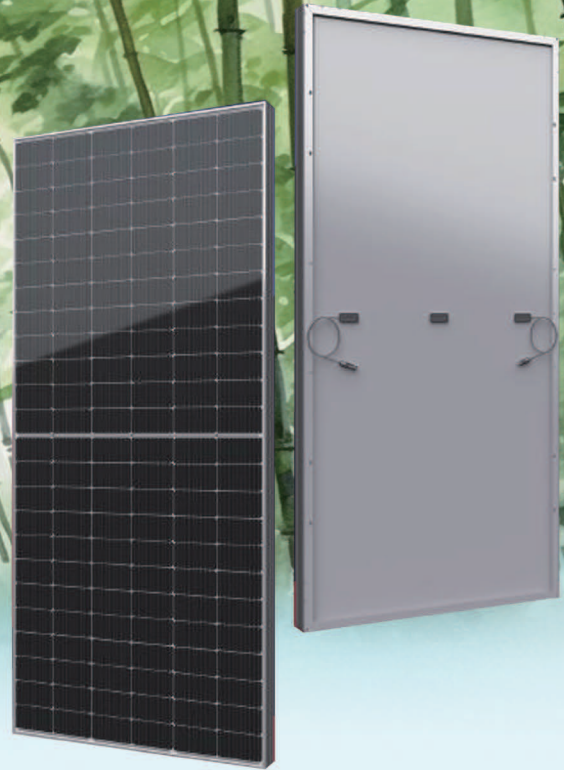




Zhu Series TOPCon Single Glass Module

570-590W 144

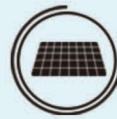


Product Features



Low attenuation

The first year attenuation is less than 2.0% with a linear attenuation of 0.55% per year within 25 years



Low risk of cracking

Adopting Multi-busbar technology it has stronger ability to resist hidden cracks and prevent breakage.



Excellent electricity generation

Excellent version design effectively enhances module output power.



High energy density

Adopting large-sized and highly efficient cells, applying efficiency enhancing packaging materials and half cut technology to improve power output.

Product System And Certification

- ISO 9001
- ISO 14001
- ISO 45001
- IEC 61215
- IEC 61730



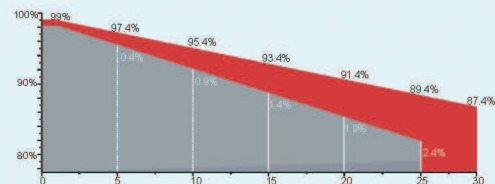
Add.: Changzhi, Shanxi, China
 Tel: +86 355 5916888
 Email: info@luansolar.com
 https://www.luansolar.com

Leading Quality Standards

15 year
Quality assurance

30 year
Power guarantee

-0.40 %
Annual decay



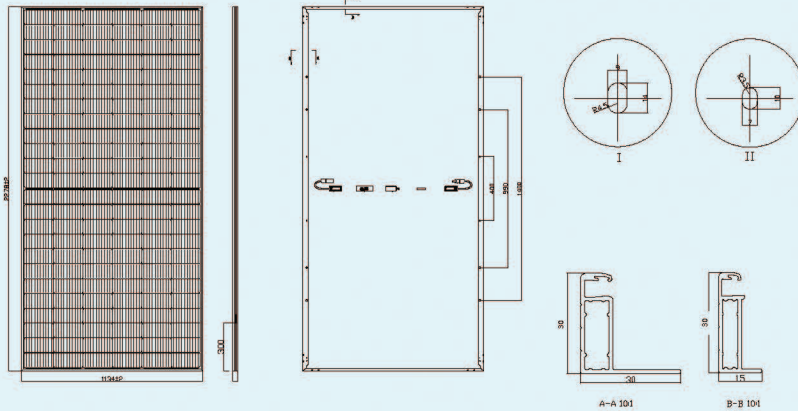
Mechanical Parameters

Cell	N-type TOPCon (144)
Dimensions	2278±2mm×1134±2mm×30±1mm
Weight	27kg±3%
Glass	3.2mm AR coating tempered glass,low iron
Frame	Anodized aluminium alloy
Junction box	IP68,3 diodes
Wireway	4mm ² , 350mm (+) /350mm (-) or customized length
Packaging	36pieces/pallet
Loading quantity	20GP: 180pieces, 40GP: 360pieces, 40HQ: 720pieces, 13 meter truck: 720pieces, 17.5 meter truck: 864pieces

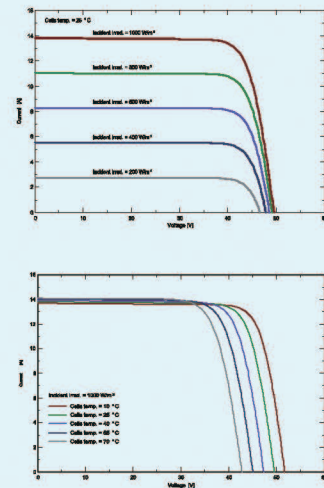
Operation Parameters

Maxsystem voltage	1500V DC
Operating Temperature	-40°C ~+85°C
Fuse's rated current	25A
Maxload front	5400Pa
Maxload back	2400Pa
Normal Operating Cell Temperature	45±2°C
Safety level	Class II
Fire performance	UL Type I

Drawing



I-V Curve



Electrical Parameters

Module	JKL144-B-570NH		JKL144-B-575NH		JKL144-B-580NH		JKL144-B-585NH		JKL144-B-590NH	
	STC	NOCT	STC	NOCT	STC	NOCT	STC	NOCT	STC	NOCT
Maximum power [W]	570	429	575	433	580	437	585	441	590	445
Maximum working voltage [V]	43.01	40.44	43.21	40.63	43.41	40.86	43.62	41.05	43.83	41.25
Maximum working current [A]	13.26	10.61	13.32	10.66	13.37	10.71	13.42	10.76	13.49	10.83
Open circuit voltage [V]	51.71	49.12	51.91	49.31	52.11	49.51	52.32	49.73	52.52	49.92
Short circuit current [A]	13.95	11.16	14.01	11.21	14.07	11.26	14.13	11.31	14.21	11.38
EFF [%]	22.07%		22.26%		22.45%		22.66%		22.85%	
Power tolerance(W)	0 ~ +5W									
Short circuit current temperature coefficient	+0.046%/°C									
Open circuit voltage temperature coefficient	-0.250%/°C									
Maximum power temperature coefficient	-0.300%/°C									
STC	Irradiance 1000W/m ² , Cell temperature 25° C, Spectral AM1.5									
NOCT	Irradiance 800W/m ² , Ambient temperature 20°C , Spectrum AM1.5, Wind speed 1m/s									

Note: The electrical performance in this product catalog do not only refer to a single module, or are they promised in the contract. The electrical parameters are only used for comparison between different module types.